



NORWOOD FASHIONS

Your Sustainable Apparel Solution Partner

Why Sri Lanka

- Sri Lanka is well geared to meet global market demand for fast, high quality ethical fashion products.
- Sri Lanka has made great progress in controlling the spread of COVID-19
- Three decades of experience.
- Environmental friendly factories equipped with latest technology.
- Ethical practices—known to the world as a producer of garments under the principles of Ethical working conditions, free of child labor, free of forced labor, free of discrimination on any grounds and free of sweatshop practices.
- International reputation as a reliable and a quality manufacturer with a highly competent, skilled and literate workforce having the ability to produce various types of products under one roof.
- GSP+ trade concessions.



Why Sri Lanka

- Large number of companies that are regional players and have the capacity to provide competitive regional advantage by harnessing regional strengths in the supply chain.
- Focus to improve speed on delivery using strategic location advantage, coupled with the conducive business friendly environment within the country.
- Innovation focused factories which offers superior product development and design resources.
- Availability of 3PL Logistic support





Why Norwood Fashions

- Environmentally sustainable factories built on the principles of green architecture
 - BSCI/Sedex approved manufacturing plants
 - OEKOTEX class 1 and GOTS approved manufacturing units
 - Environmentally sustainable manufacturing practices
 - UK based Technical design support to customers
 - Strategic partnership with major raw material suppliers
 - Ability to handle embellishment products
 - Strategic partnership with 3PL logistic service providers
 - Ability to handle a mix of products for all age groups/genders
 - We use FSC certified or 100% recycled packaging
 - Use of renewable energy
- 



Our Vision

Strive for excellence



Our Mission

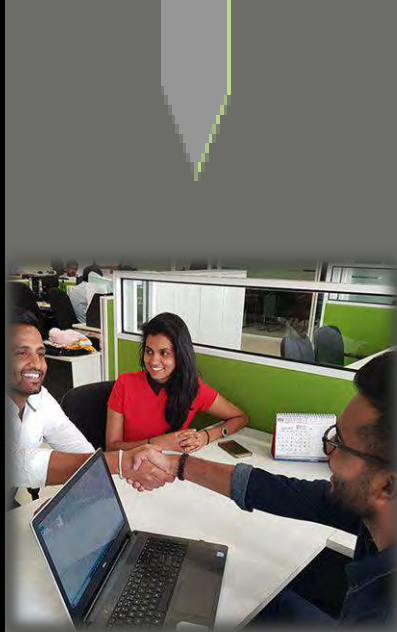
To provide an economic Apparel sourcing solution to Major retailers, whilst meeting the expectations of our Stake holders





Customer

Embrace newer technologies, trends and directions in order to provide service and product excellence.



Suppliers

Support supplier expectations in terms of business volumes and return



Employees

To be reputed for its above average working conditions, labor, health and safety policies.



Environment

Mitigate the use of environmentally unfriendly inputs and continuous shift towards sustainable manufacturing.



Community

Engage in continuous community projects that enhances the values of the society



Government

Support the government in developing the economy in terms of providing infrastructure, employment and foreign exchange.

Our Strengths



- We have a competent team of passionate employees who are capable of sourcing various fabric and trims at very competitive prices locally, as well as from the region.
- UK based Technical design support to customers
- We can provide total solution from design to dispatch.
- We can provide various supply chain solutions such as, Freeport services, warehousing, consolidation, etc. based on customer requirements.
- Holistic approach towards Critical Path Management.
- Sourcing office in Hong Kong for speedy, flexible and innovative download

Business Management Tools

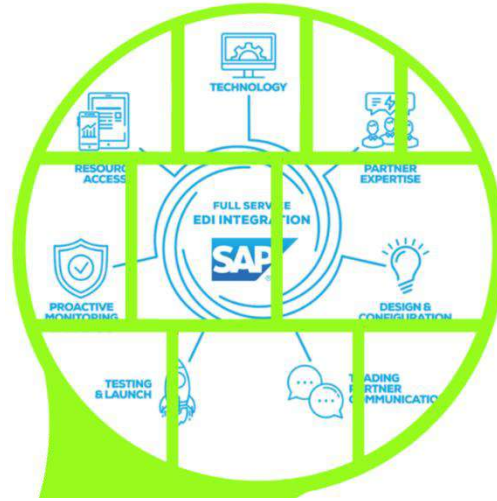


BROWZWEAR

Planning to invest for Browzwear VSTITCHER 3D solution to provide a virtual fitting and development sample experience to our esteemed customers



SAP ERP is an enterprise resource planning software solution

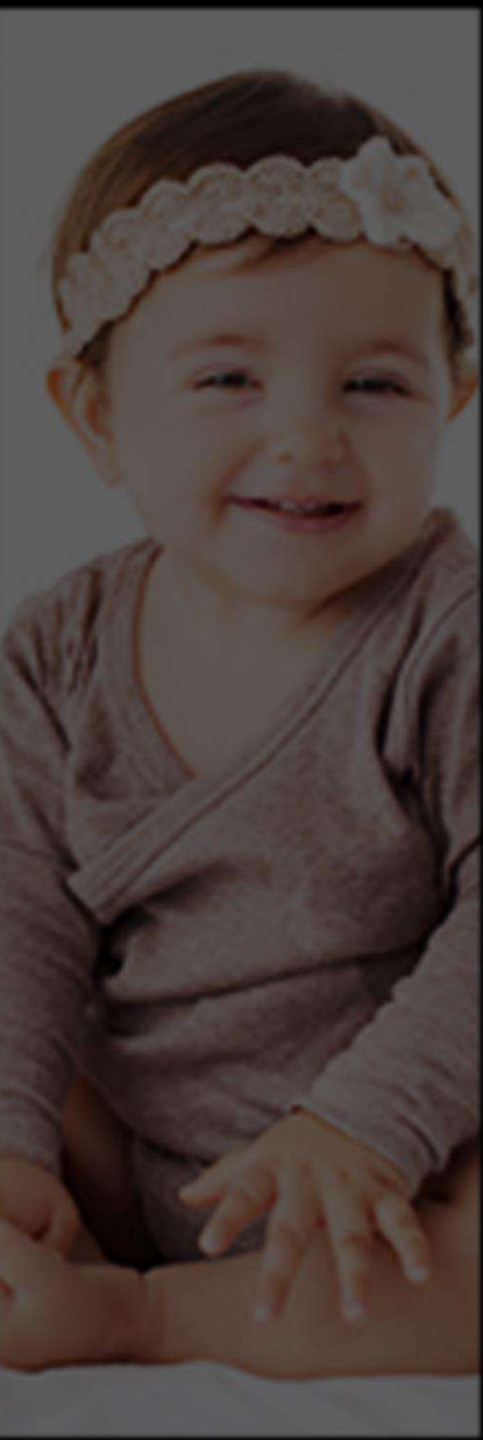
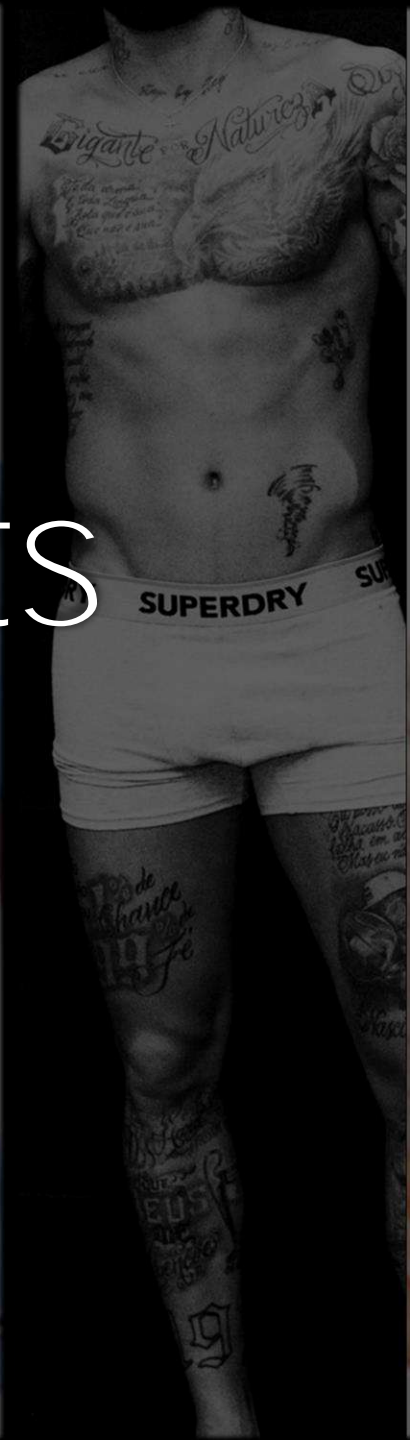
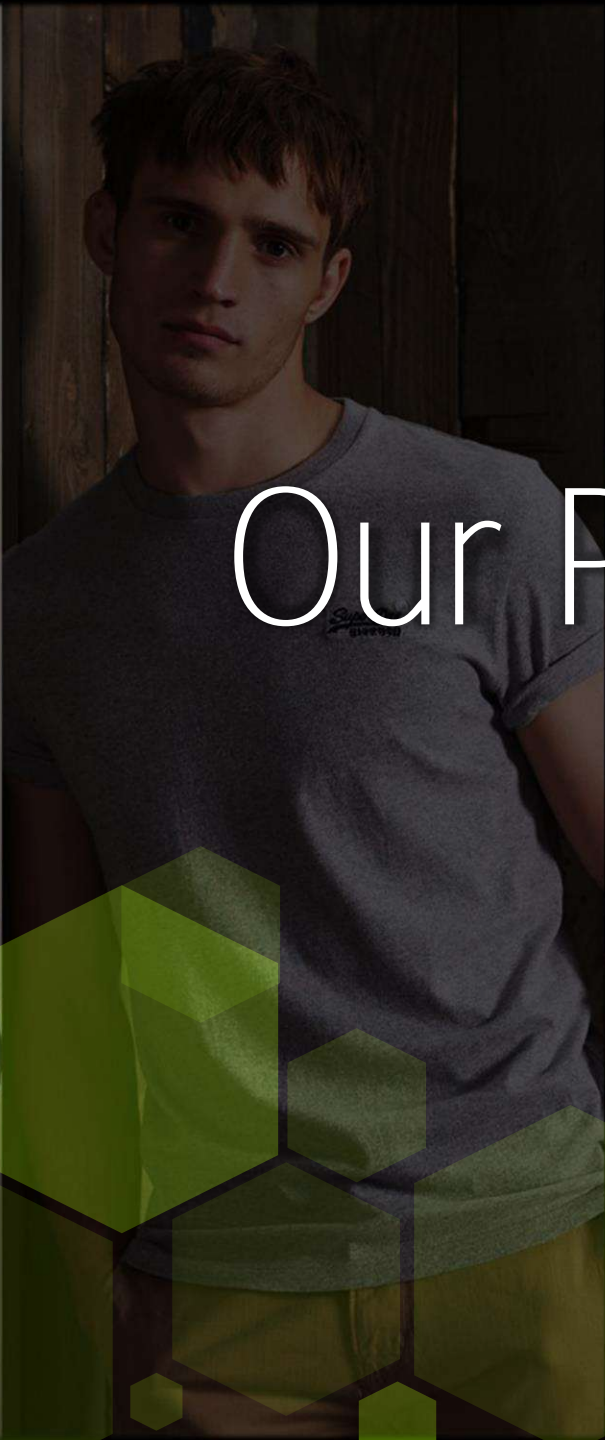
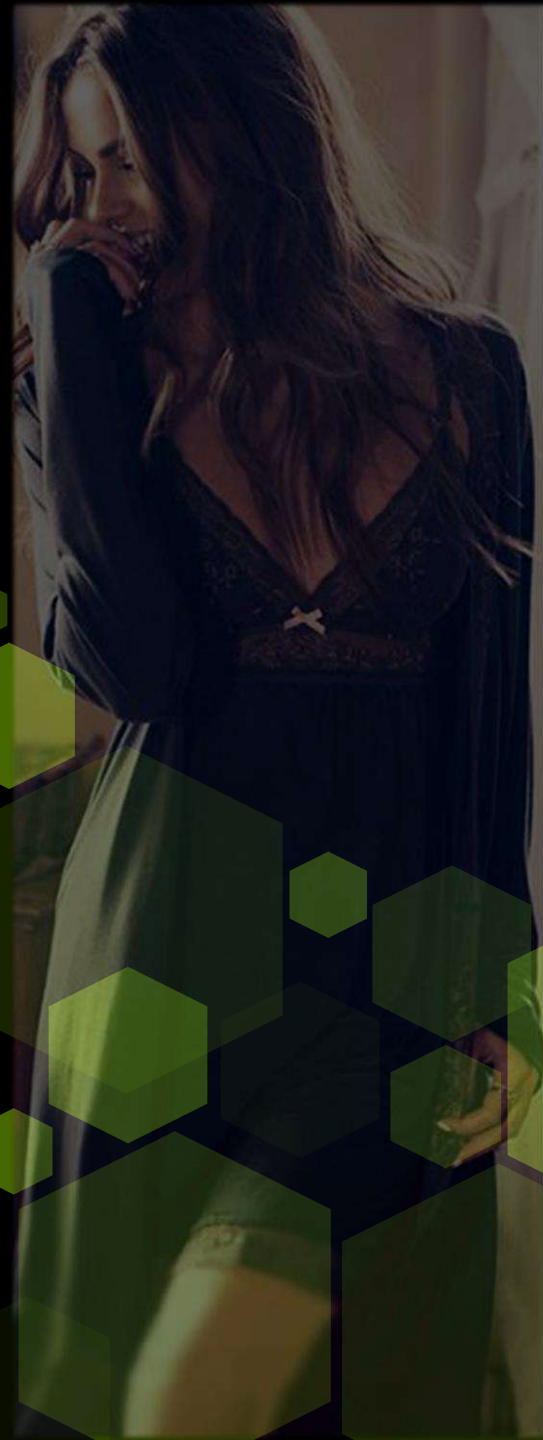


RES.Q | QMS is a cloud-based quality management solution



Fully automated Cutting system

Our Products



Baby Wear



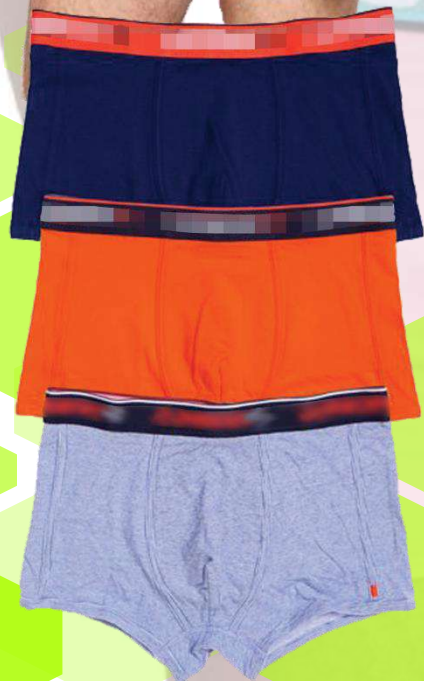
Kids PJ Sets



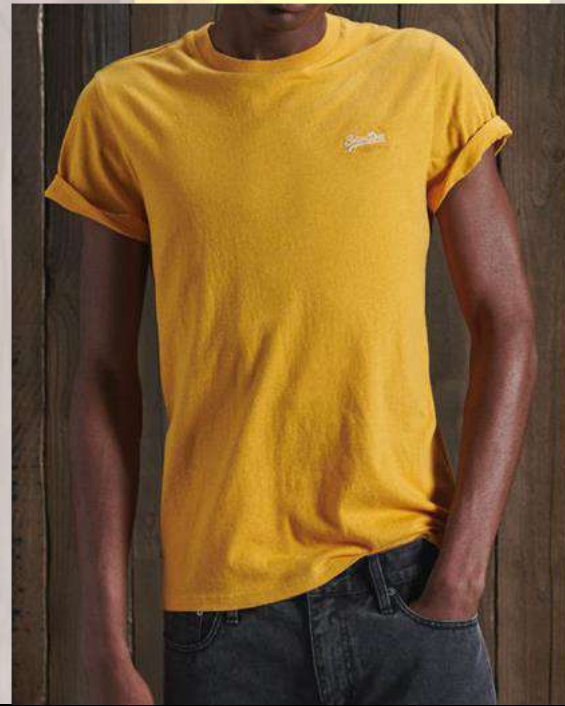
Women's Nightwear



Men's Underwear



Mens T-Shirts



LAB COATS

Hospital Wear



PANTS



Our manufacturing plants

Norwood Fashions – Hatton

Norwood Fashions – Polgahawela





540
MACHINES



900
TOTAL
CADRE

Hatton
Current
Capacity



1.1mn
CAPACITY
PER MONTH

Hatton





540
MACHINES



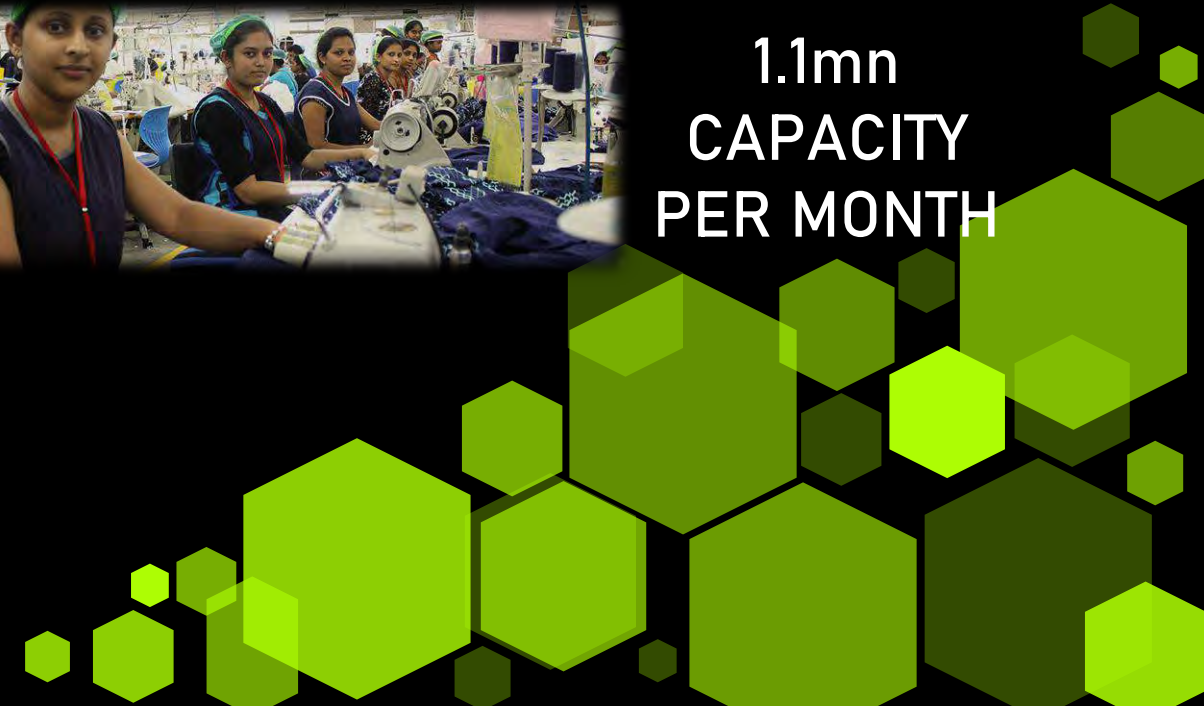
900
TOTAL
CADRE

Polgahawela

Current
Capacity



1.1mn
CAPACITY
PER MONTH



Polgahawela Expansion





Polgahawela Expansion

Our Brands



極度乾燥(しなさい)
Superdry.

N U T
M E G



Cały dla małych!



Our Certifications





CEO
+94 77 778 3475
gerald@norwoodfashions.com



Director Operations
+9476 821 0267
rafi@norwoodfashions.com

Contact Info:

Thank you!

